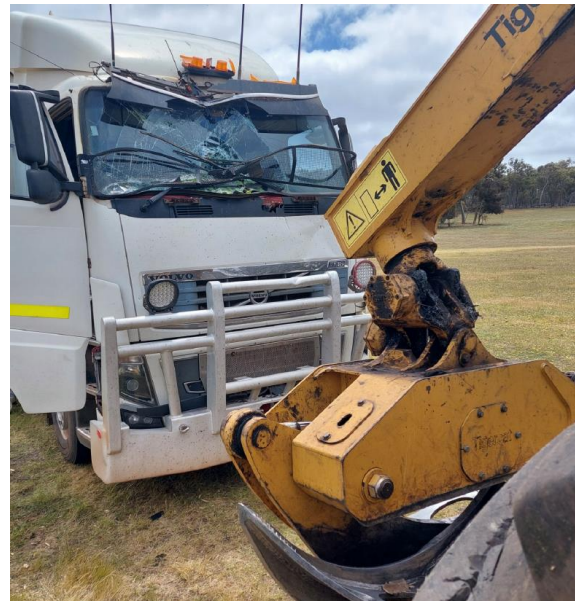


# SAFETY ALERT



**TITLE:** Skidder  
reverses into  
stationery truck  
**Number:** 76  
**Date:** 5 December 22



## Background

On 31<sup>st</sup> October 2022, a skidder reversed into the cab of a truck as it waited in the marshalling area, prior to being called in for loading.

Fortunately, there were no injuries, but this incident had the potential to cause significant harm.

## Key points

- Skidder operator was back blading to spread split chip which builds up in the loading area.
- A fault with the skidder seat required the operator to continuously hold the button down to stop the seat swivelling while they operated the machine.
- The truck was stationery, in the designated marshalling area (safe work zone) waiting to be called under the loading conveyor.
- The continuous manual adjustment to the seat has distracted the operator impacting their spatial awareness and proximity to the marshalling area where the truck was parked.
- The seat fault was reported by the operator and the part ordered and was due to be installed the day the incident occurred.

Version control: V01/August2019  
Authority: Manager Environment and Safety  
Responsible Officer: Senior Coordinator FMS  
Security classification: Staff in confidence  
Uncontrolled when printed

# SAFETY ALERT



- The truck driver was looking down completing load documentation and did not see the skidder approaching.
- The machine was not stood down whilst awaiting repairs.
- An operational decision was made to continue using this machine in this condition. No risk assessment was completed as to the potential impact of using this machine in this condition.